

BRYANT ROAD

RIVER

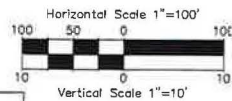
WHITTIER ROAD

ROUTE 113

BEARCAMP

PROPOSED UTILITY POLE
8/246

PROPOSED UTILITY POLE
8/247



NOTES

1. MINIMUM AND MAXIMUM SAG CALCULATIONS PROVIDED BY EVERSOURCE ENERGY

EXHIBIT 1



Civil Engineers
Structural Engineers
Traffic Engineers
Land Surveyors
Landscape Architects
Scientists

48 Constitution Drive
Bedford, NH 03110
Phone (603) 472-4488
Fax (603) 472-9747
www.tfmoran.com

BEARCAMP RIVER
CROSSING

PLAN AND PROFILE
3116X1 LINE

PREPARED FOR
EVERSOURCE ENERGY

Copyright 2017 ©Thomas F. Moran, Inc.
48 Constitution Drive, Bedford, N.H. 03110

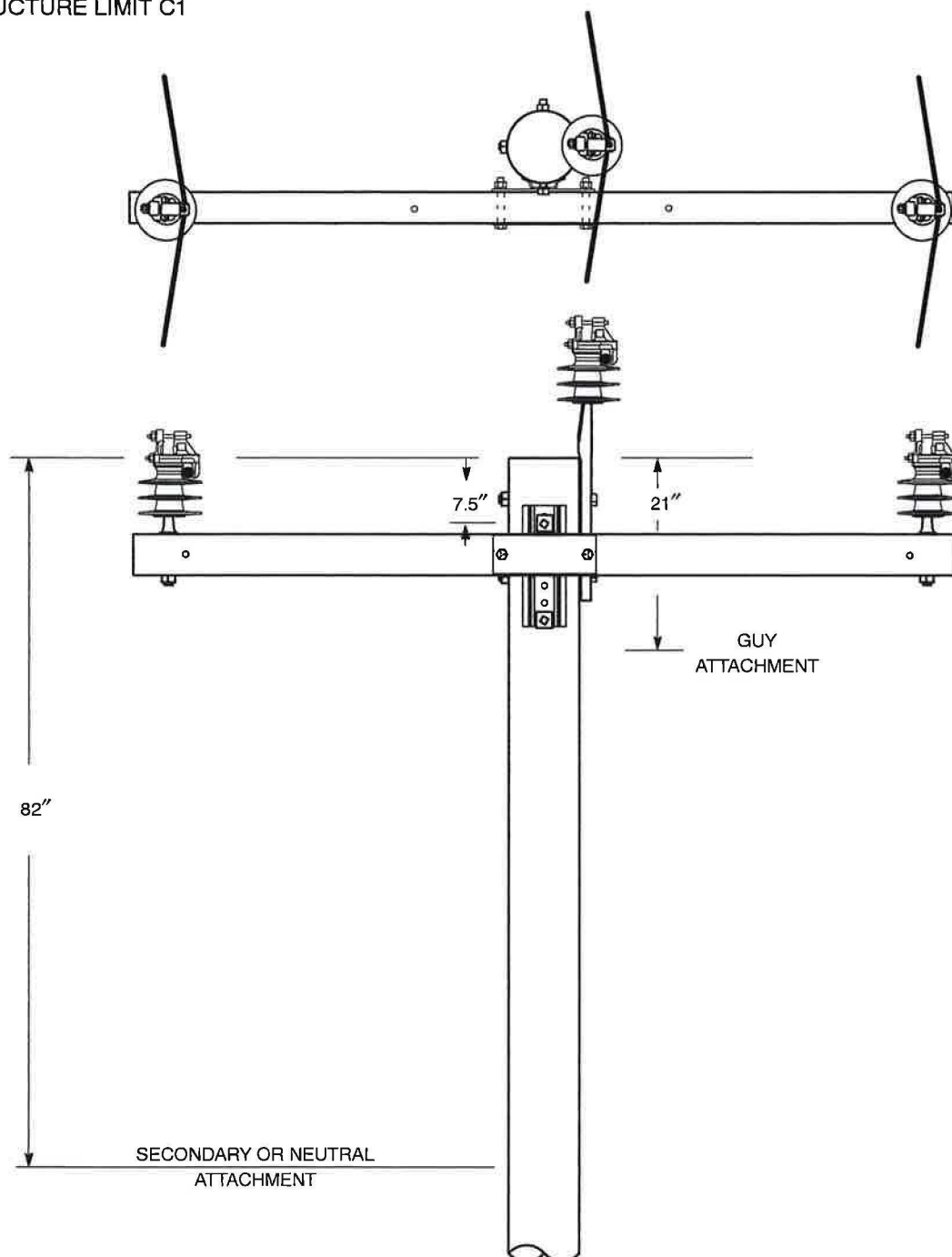
All rights reserved. These plans and materials may not be copied, duplicated, replicated or otherwise reproduced in any form whatsoever without the prior written permission of Thomas F. Moran, Inc.

This plan is not effective unless signed by a duly authorized officer of Thomas F. Moran, Inc.

REV.	DATE	DESCRIPTION	DR	CK

95807.00	SCALE: AS SHOWN	9/7/17
DR JB CH NG CADFILE	95807-00 Site.DWG	

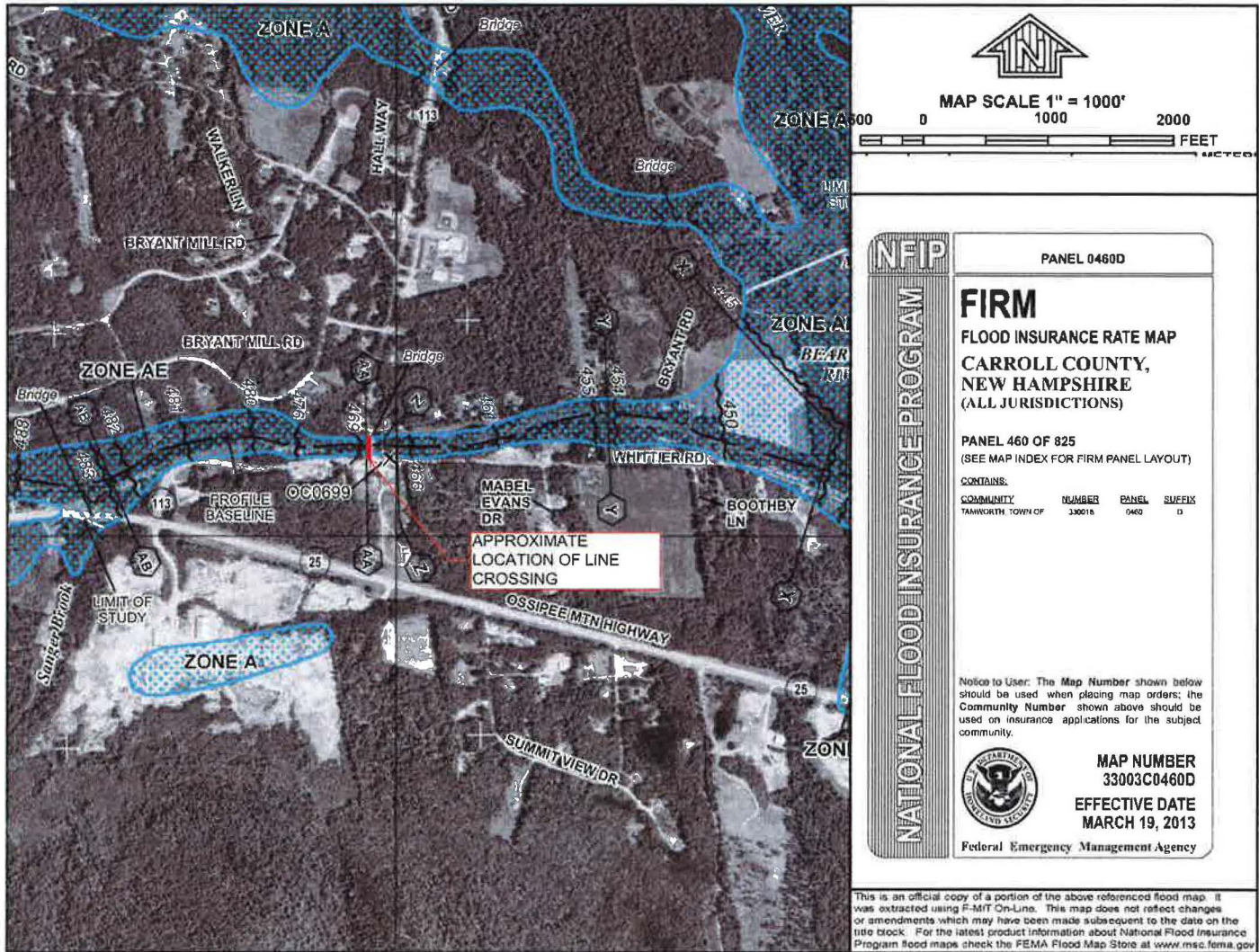
STRUCTURE LIMIT C1

**Notes**

1. For the **vise-top** insulator the range in feet of pull of a corner when installing a conductor in the **top position** is as follows: 1/0 ACSR bare and covered, 0–9; 336.4 Al bare and covered, 0–5; and 556.5 Al bare and covered, 0–4.
2. Additional holes may be drilled in the crossarm if required. A carbide tipped bit is recommended. Maintain a minimum of two inch separation between holes.

ORIGINAL	35 KV MGY AND BELOW – FIBERGLASS CROSSARM CONSTRUCTION			
5/13/14				
APPROVED	THREE-PHASE – TANGENT AND SMALL CORNER			
<i>Cwp</i>	EVERSOURCE ENERGY	CONSTRUCTION STANDARD	DTR 10.421	

EXHIBIT 3



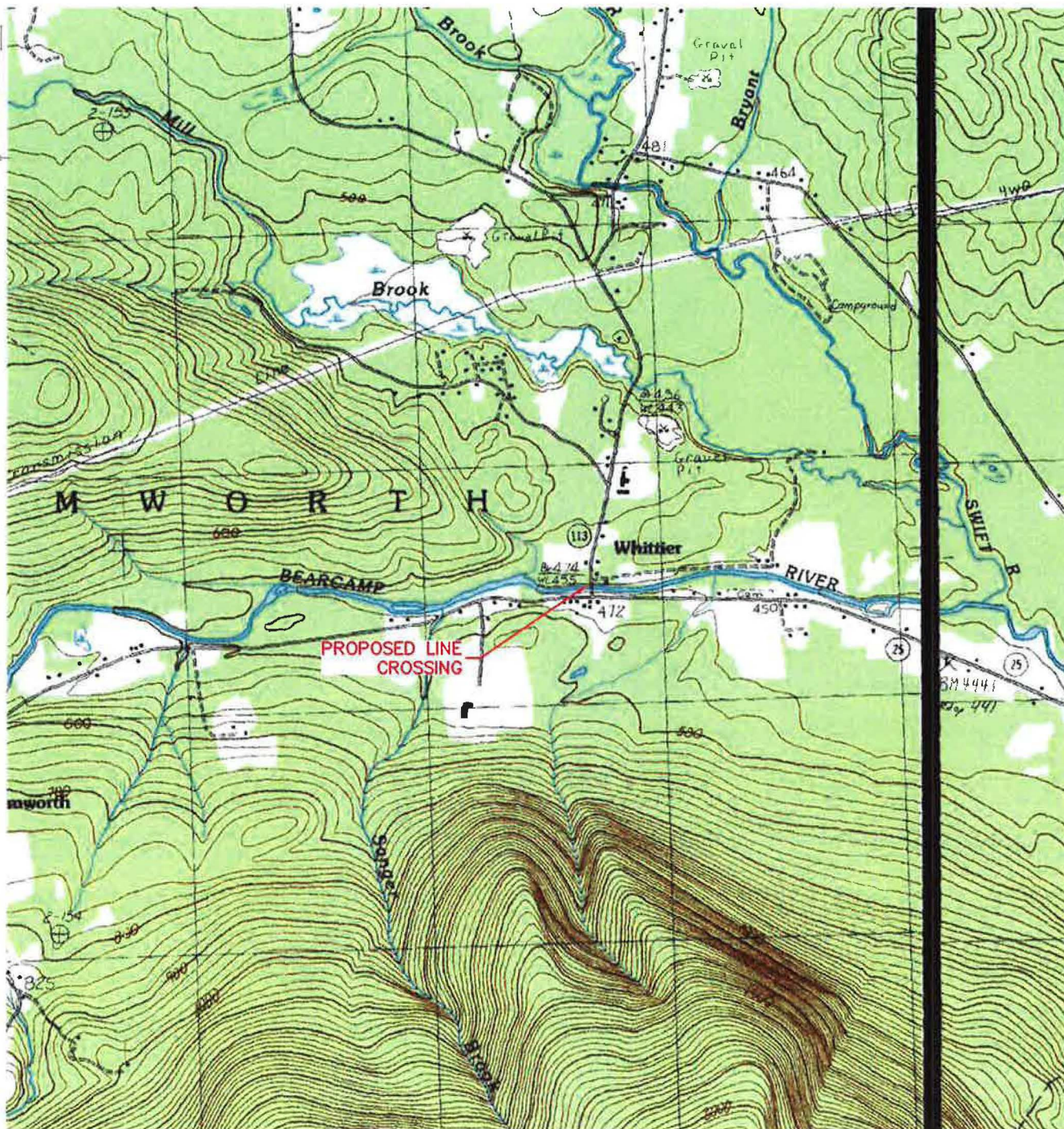


EXHIBIT 4



Civil Engineers
Structural Engineers
Traffic Engineers
Land Surveyors
Landscape Architects
Scientists

48 Constitution Drive
Bedford, NH 03110
Phone (603) 472-4488
Fax (603) 472-9747
www.tfmoran.com

BEARCAMP RIVER CROSSING

USGS LOCUS MAP 3116X1 LINE

PREPARED FOR
EVERSOURCE ENERGY

FILE	95807-00	SCALE: 1"=2,000'			7/2717	
		DR	JB	CK	NG	CADFILE

95807-00 PUC.DWG